



# **MOJAVE PRESERVE FACELIFT // TRAIL GUARDIAN EVENT**

## **NOVEMBER 14, 2020**

### **RECREATION INCIDENT COMMAND PLAN**

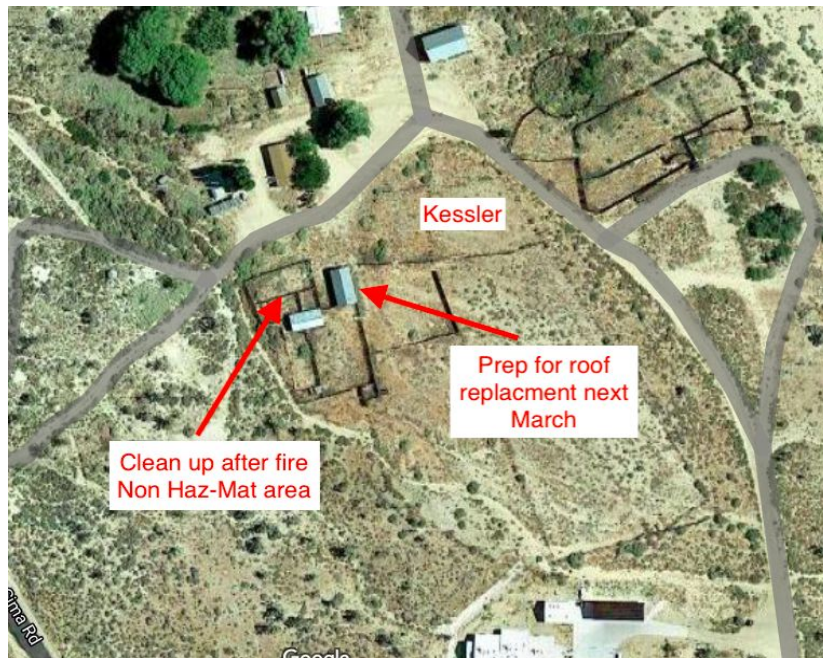
1. Plan Cover Sheet III-1: Incident name/key info; map
2. Plan Organization III-2: Personnel roster assigned to leader jobs
3. Plan Summary III-3: Plan overview
4. Tailgate Safety Session III-6: Safety info, medical plan, danger points, health and safety

**PLAN COVER RICS III-1**  
**Mojave Facelift/Trail Guardian**

Incident Commander: Kent Reynolds OLB & Debra Hughson NPS

Location: Mojave Preserve

Event Date: November 14, 2020



**PLAN ORGANIZATION RICS III-2**

**Mojave Facelift/Trail Guardian**

Incident Commander: Kent Reynolds OLB & Debra Hughson NPS

Location: Mojave Preserve

Event Date: November 14, 2020

Incident Commander (IC)	Kent Reynolds OLB & Debra Hughson NPS
Documentation Team Leader	Corrie Murguia, Rob Irwin OLB & NPS Rep.
Public relations/media	Michael Murgia, Mike Johnston & NPS Rep.
DV Mine Division Team Leader	Bob Brann OLB & NPS Rep.
Death Valley Crew Leader	Kevin Reinig OLB
Death Valley Crew Leader	_____
Kessler Division Team Leader	Tom Butler OLB & NPS Rep.
Kessler Crew Leader	Tim Leto
Kessler Crew Leader	_____

**PLAN SUMMARY RICS III-3**  
**Mojave Facelift/Trail Guardian**

Incident Commander: Kent Reynolds OLB & Debra Hughson NPS

Location: Mojave Preserve

Event Date: November 14, 2020

**I. GOALS, OBJECTIVES & EXPECTATIONS**

On November 14, 2020, Overland Bound will remove garbage and non-historical debris from Death Valley Mine. The group will also remove fire debris from Kessler Ranch, and prepare the Kessler Ranch Barn for restoration.

**II. ORGANIZATION**

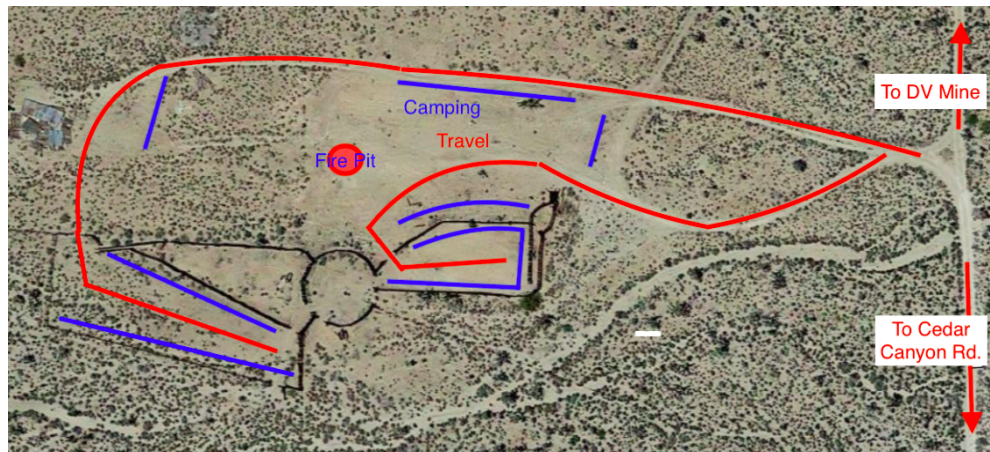
All aspects of the cleanup/debris removal will be directed by NPS, and Overland Bound Volunteers will work at the direction of NPS under the volunteer agreement.

**III. LOGISTICS**

Base Camp will be at the Thomas Place/Ranch (see attached base camp travel & camping diagram). We will be at the event location during lunch so please bring food and water. At no time will alcoholic beverages be allowed at the work locations. Two groups will travel to the work locations starting at 0800hrs. Kessler Ranch group will leave first and Death Valley Mine group will leave approximately 15 minutes later. All GPS way points are on the Rally Point.

**IV. COMMUNICATIONS**

All Overland Bound comms will be on Ham primary 146.460 secondary 146.400 and GMRS 15. Unless changed at the event.



## **SAFETY & Job Hazard Analysis RICS III-6**

### **Mojave Facelift/Trail Guardian**

Incident Commander: Kent Reynolds OLB & Debra Hughson NPS

Location: Mojave Preserve

Event Date: November 14, 2020

#### **I. PROJECT OVERVIEW**

##### **Death Valley Mine**

Removing non-historical debris and trash from two pits just south of the Death Valley Mine main building, debris will be transferred to a NPS vehicle and driven to Cima Road and loaded into dumpsters. General cleanup of the grounds concentrating on broken glass.

##### **Kessler Ranch**

Picking up fire debris and moving it to a central location. This will be confined to the Non-Hazardous areas as defined by NPS personnel. There is a possibility that the debris might be moved to the dumpsters at Cema.

#### **II. KEY DANGER POINTS**

Some watch out situations, sharp objects, lifting heavy debris, possible snakes, open mine shafts, traveling to and from the event and the dumpster location.

#### **III. SAFETY GEAR CONSIDERATIONS**

Everyone must wear work boots or heavy hiking boots, work gloves (not nitrile gloves), eye protection when around flying debris. Covid face masks will be required when around other volunteers or NPS staff. If operating within the proximity of a paved road Overland Bound Trail Guardian fluorescent vests will be provided by Kent.

#### **IV. PERSONAL HEALTH & HYGIENE**

CDC Guidelines Covid-19 social distancing will be followed and volunteers will supply their own personal protective equipment.

## **MEDICAL PLAN RICS III-6**

### **I. EMERGENCY PROCEDURES**

There will be a paramedic at Death Valley Mine work and a registered nurse at Kessler Ranch. In the event of an incident contact your Division Team Leader Bob Brann at Death Valley Mine and Tom Butler at Kessler Ranch.

### **II. HOSPITALS**

If ground transportation is required, NPS will coordinate with local EMS.

### **III. OTHER NOTES**

Cell service does work in the majority of the park so in the event you are injured and you are not with our group call 911. Make sure you have your GPS location. In the event you do not have a cell signal use your radio communications or two way satellite device to call for help.