

# Lake Wivenhoe

## RECREATION GUIDE



## OUR VISION

To manage access to recreation opportunities while protecting the natural resources and water quality

# About Lake Wivenhoe

Lake Wivenhoe, located approximately 80 kilometres north-west of Brisbane, provides great recreational facilities as well as being part of the South East Queensland's interconnected bulk water supply network that supplies the region's drinking water.

The Wivenhoe Dam was built on the Brisbane River after the 1974 flood event. The dam wall is 2.3 kilometres long, with five radial gates to release water. While its primary function is to provide safe, reliable water supply, the dam also provides flood mitigation.

Lake Wivenhoe is close to both Lake Somerset and Lake Atkinson. This cluster of lakes provides a range of recreational opportunities for visitors to enjoy.

## RECREATION REVIEW UPDATE

Seqwater is committed to providing quality recreation facilities that everyone can enjoy. We wanted to know what the community thought of current facilities and what suggestions you had for the future, so in 2013 we started a full Recreation Review across our assets. We appreciate the efforts of everyone who took the time to participate in our workshops and online surveys.

While we want to implement as many ideas as possible, Seqwater must remain committed to protecting our natural environment and minimising the risks to water quality.

Changes will be implemented once funding has been secured and all environmental impact analysis has been completed. Progress updates, along with details of the feedback received is available at [seqwater.com.au/recreview](http://seqwater.com.au/recreview).

We value the unique status of the Jinibara and Jagera People as the original owners and custodians of the land and water around Lake Wivenhoe.

# Protecting our waterways & the environment

We all need to do our part to ensure we keep our waterways healthy. It's not just our bushland areas that are threatened by weeds, it is also our wetlands, waterways and lakes that are suffering.

Serious aquatic weeds like Water Hyacinth, Salvinia and Cabomba are very invasive and out-compete local species, seriously affecting the local ecology and water quality. Weeds are able to reproduce from even the smallest of fragments or seeds, and trying to control these weeds is time consuming and costly.

You can help protect our waterways from weeds by:

- removing all visible mud and plants from your equipment, boats, trailers, boots, crab pots etc. before leaving
- eliminating water from all equipment before transporting it anywhere, as the water may contain plant fragments or seeds

- cleaning and drying anything that came into contact with the water
- cleaning boats, motors, trailers, floats, anchors etc. before leaving. If possible allow the equipment to dry for about five days before entering new waters
- not releasing or putting plants, fish or other animals into a body of water they did not come from. This is an important step to prevent the spread of introduced species of plants and animals into our waterways.

To protect our drinking water supply please:

- leave the facilities as you found them. Do not cause damage to any property, flora or fauna
- place litter in the bins provided
- leave your pets at home. Dogs and other domestic animals can disturb the wildlife that live in our natural areas.

## DOMESTIC PETS

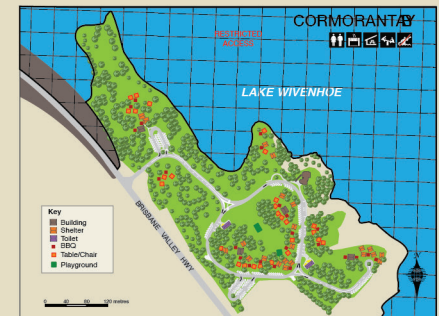
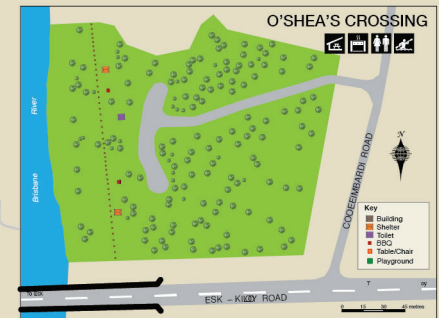
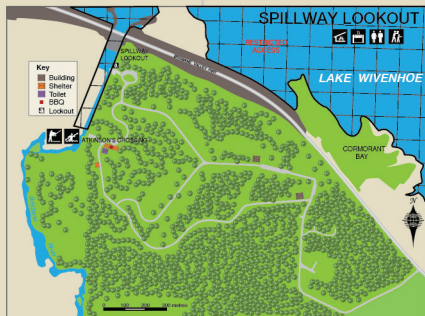
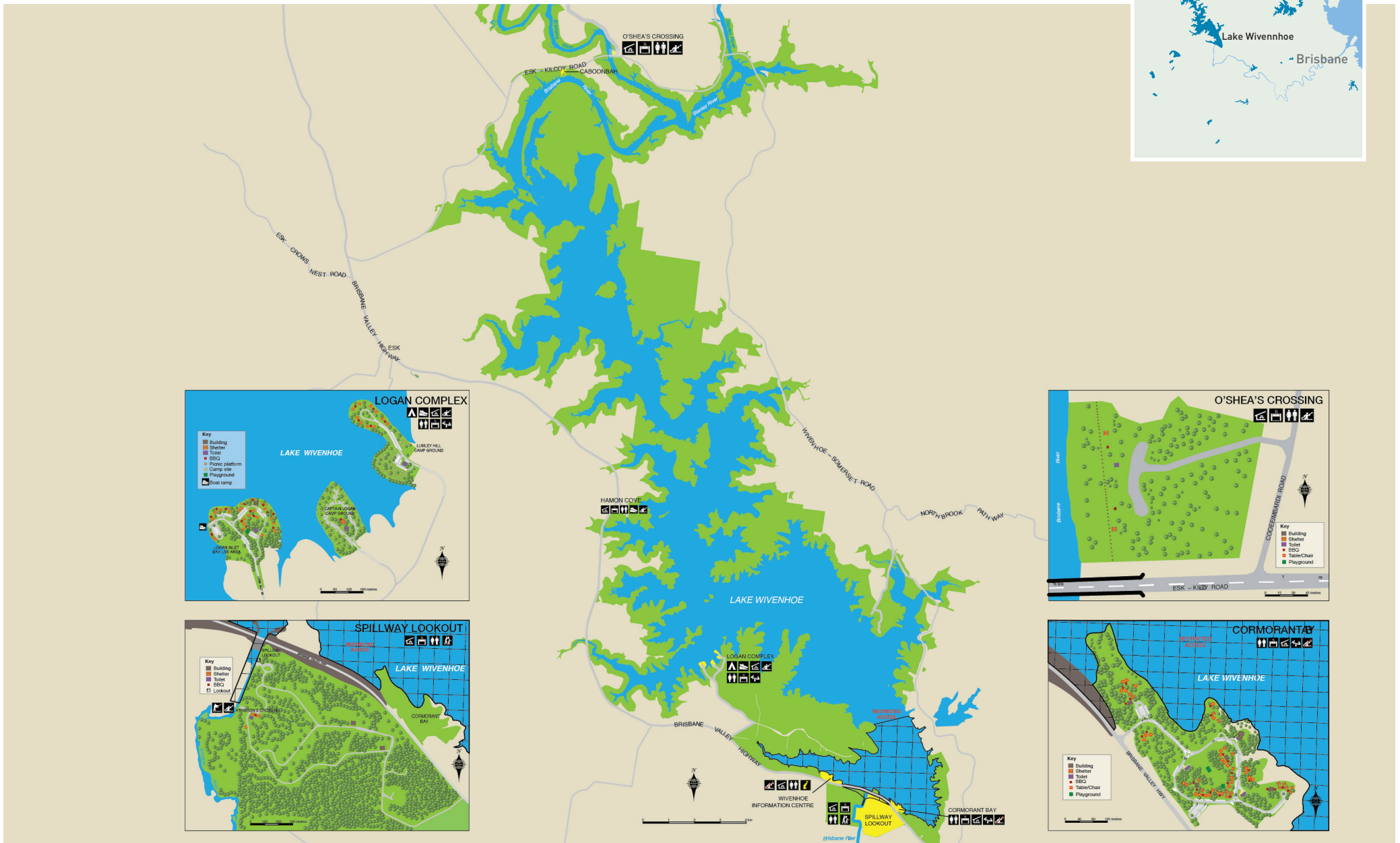
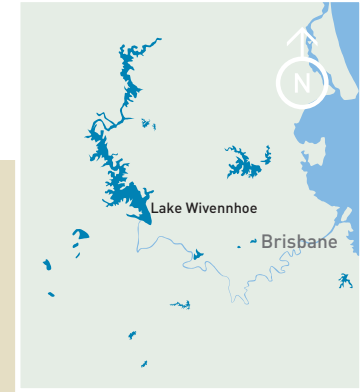
The areas around Lake Wivenhoe are home to an abundance of native wildlife, including koalas, which have been declared vulnerable by the Australian Government. It is very important that we all take measures to protect these animals and their habitat.

Domestic pets and other animals cannot be brought into any of the catchment areas, lake or recreation areas at Lake Wivenhoe.

Dogs are not permitted at Lake Wivenhoe.



# Recreation location map



# Picnics and Playgrounds



## Picnicking and BBQs

You can enjoy a picnic at the following locations:

- Hamon Cove Day Use Area (Brisbane Valley Highway)
- Logan's Inlet Day Use Area (Hay Road – off Brisbane Valley Highway Fernvale)
- Cormorant Bay Day Use Area (Brisbane Valley Highway Fernvale)
- O'Shea's Crossing Day Use Area (Esk-Kilcoy Road Somerset)
- Spillway Common (Brisbane Valley Highway)

All areas have great facilities including picnic tables, shelters and free BBQs.

Sites are currently open 7 days a week from 6am-6pm.

Why not visit the Wivenhoe Information Centre on the Brisbane Valley Highway? Check the Seqwater website for opening hours.



## Playgrounds

Looking for something to keep the kids amused? Playgrounds are located at:

- Logan's Inlet Day Use Area (Hay Road – off Brisbane Valley Highway Fernvale)
- Cormorant Bay Day Use Area (Brisbane Valley Highway Fernvale)

# Boats, Bait and Bathers



## Boating

Boating is a very popular activity at Lake Wivenhoe for fisherman and other enthusiasts. Restricted motorised and non-motorised watercraft are permitted on the lake.

For your safety and to protect the riparian areas around the lake, boats and vessels are only to be operated from designated launch points.

All activities on Seqwater lakes are covered by the Boating Regulations set by Maritime Safety Queensland ([www.msq.qld.gov.au](http://www.msq.qld.gov.au)). Please remember to keep a safe distance from swimmers and paddlers.

Please be courteous to our neighbours. Much of the land surrounding the lake is private property. Do not launch, retrieve or beach on land around the lake, other than at signed, designated recreation areas.

## Boating Permits

A boating permit is required for all registered and trailered vessels at Lake Wivenhoe.

Boating permits are available from Lake Wivenhoe Information Centre, off Brisbane Valley Highway at Wivenhoe Dam or by calling (07) 5427 8100. They are also available locally at selected outlets. A list of outlets that sell permits is available on the boating page of the Seqwater website. [www.seqwater.com.au](http://www.seqwater.com.au)

The money raised by boating permits is used by Seqwater to offset the cost of providing and maintaining recreational facilities around the lakes.

## RECREATION REVIEW UPDATE

In response to feedback, restricted motorised watercraft are now permitted on Lake Wivenhoe as follows:

- All vessels are not to exceed 6 knots. This means if your vessel is on the plane...you are going too fast!
- All fuel powered vessels must only use low emission outboards/ engines, (4 strokes or fuel injected 2 strokes)

We ask that all users observe these restrictions. Regular patrols will be undertaken.

A single boating permit scheme is being considered for all Seqwater lakes. No changes to the existing boating permit scheme will be made until after the recreation review process is completed in late 2014.

For further information on progress please visit our website [www.seqwater.com.au/recreview](http://www.seqwater.com.au/recreview)



## Water Skiing

Water skiing, jet skiing, wakeboarding and tubing are not permitted on Lake Wivenhoe. However, these activities are available at nearby Lake Atkinson and Lake Somerset.



## Boat Ramps

Ramps are open 7 days per week from 6am-6pm.

Boat ramps are located at:

- Hamon Cove Day Use Area (Brisbane Valley Highway)
- Logan's Inlet Day Use Area (Hay Road – off Brisbane Valley Highway Fernvale)

In addition to the boat ramps listed above, there are paddle craft access points at the following locations:

- O'Shea's Crossing Day Use Area (Esk-Kilcoy Road, Caboonbah)
- Atkinson's Crossing – access to the Brisbane River below Lake Wivenhoe, through the Spillway Lookout recreation area (Brisbane Valley Highway, Wivenhoe Pocket)



## Fishing

Shore line fishing can be carried out along the shore of designated recreation areas as follows:

- Branch Creek Day Use Area (Wivenhoe – Somerset Road, Dundas)
- Hamon Cove Day Use Area (Brisbane Valley Highway)
- Logan's Inlet Day Use Area (Hay Road – off Brisbane Valley Highway, Fernvale)
- Cormorant Bay Day Use Area (Brisbane Valley Highway, Fernvale)
- Lake Wivenhoe Information Centre (Brisbane Valley Highway, Fernvale)
- Atkinson Crossing (in Brisbane River, downstream of Wivenhoe Dam)

Fishing from vessels is also permitted on the lake.

Please be courteous to our neighbours. Much of the land surrounding the lake is private property. Accessing private land to fish is not permitted.

The lake is home to an abundance of wildlife. Please ensure that all rubbish, including fishing line and hooks, is discarded appropriately in bins or taken with you for disposal. There have been numerous incidents where wildlife have ingested or become entangled in discarded fishing material.

## Fishing Permits

A fishing permit is required at Lake Wivenhoe.

The Department of Agriculture, Forestry and Fisheries (DAFF) controls the fishing rules and regulations in Queensland and administers the Stocked Impoundment Permit Scheme (SIPS).

Please visit [www.daff.qld.gov.au](http://www.daff.qld.gov.au) to purchase a SIPS permit or for a list of outlets in SEQ that sells permits.



## Swimming

Need to cool down?

There is a designated swimming area located at Logan's Inlet at Lake Wivenhoe.

Your safety is important to us. Swimming is only permitted at the designated swimming area. Please remember there are no lifeguards on duty. Ensure children are supervised at all times when swimming. Please use common sense and don't swim after drinking alcohol.

## RECREATION REVIEW UPDATE

In response to feedback, Billies Bay and Hays Landing Recreation Areas will be re-opened as soon as the Hines Road Bridges are repaired by Council and funding for the infrastructure repairs has been secured. This will make available an additional boat ramp. For further information on progress please visit our website [seqwater.com.au/recreview](http://seqwater.com.au/recreview).



# Tracks and Trails

There are currently no designated trails around Lake Wivenhoe, however the day use areas at Logan's Inlet (Hay Road – off Brisbane Valley Highway, Wivenhoe Hill) and Cormorant Bay (Brisbane Valley Highway, Fernvale) are very large and offer visitors a lot of open space to enjoy a walk. The water views are a bonus!

## RECREATION REVIEW UPDATE

In response to feedback, trails will be opened at Wivenhoe Hill (Hay Road off Brisbane Valley Highway) once funding has been secured to establish the trails. These trails will be multi-use, catering for walkers, mountain bikers and horse riders. For further information on progress please visit our website [seqwater.com.au/recreview](http://seqwater.com.au/recreview).

# Rest and Relaxation

Want to escape the crowds and get back to nature? Why not unwind over a few days at Lake Wivenhoe.



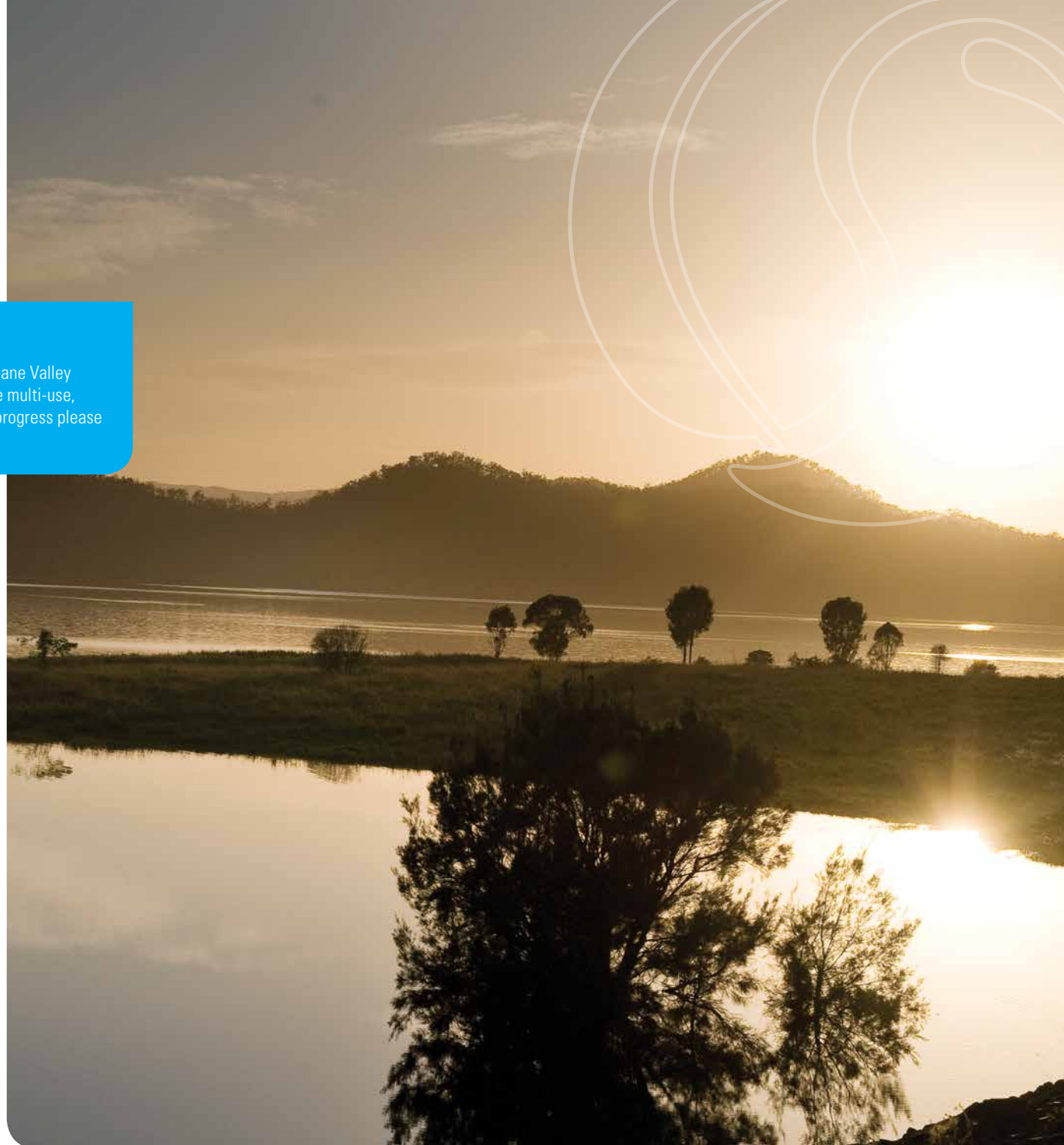
## Camping

There is a campground at Lake Wivenhoe catering for caravans, camper trailers and tents located near Logan's Inlet off the Brisbane Valley Highway.

The site is run by private operators. For all enquiries and bookings please contact the campground directly. Details are available on their website: [www.seqlakesideescapes.com.au](http://www.seqlakesideescapes.com.au).

Overnight stays on the water are not permitted.

Please be courteous to our neighbours. Much of the land surrounding the lake is private property. Camping is only permitted in designated camping areas.



# Events and Other Activities

## Events

Before you hold an event at any Seqwater site, you will need to apply for a permit through our website. Please submit applications at least four weeks prior to your event to allow sufficient time for your application to be processed.

## Commercial Activities

Seqwater is dedicated to providing quality facilities to the public.

We work in conjunction with commercial operators, where suitable, to enhance the public's enjoyment and appreciation of our natural areas. You can find further details about commercial activities, the submission process and our Commercial Activities Policy, on our website.

## Site Tours

Seqwater's educational tours are an opportunity to learn about our operations and the link between catchments, storage and treatment as part of the broader water cycle.

Tours are available to primary and secondary schools, TAFE and universities, community groups and professional delegations, across a number of sites.

For bookings and more information, visit our website and complete the site tour booking form or email [education@seqwater.com.au](mailto:education@seqwater.com.au).

## RECREATION REVIEW UPDATE

A change to opening hours is being considered for all Seqwater lakes. Any changes will be announced towards the end of 2014. Progress updates will be available at [seqwater.com.au/recreview](http://seqwater.com.au/recreview).

# Do's and Don'ts

## YES

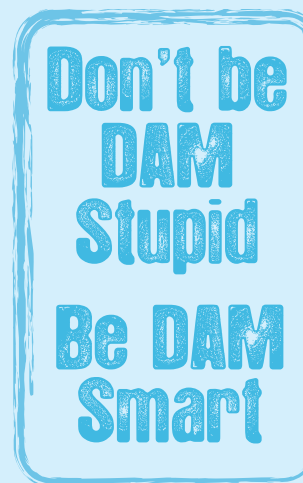
- ✓ bbqs
- ✓ picnicking
- ✓ camping (at private camp grounds)
- ✓ walking
- ✓ mountain biking
- ✓ horse riding
- ✓ swimming, scuba diving, or snorkelling (in designated swimming area)
- ✓ motorised boats \*
- ✓ canoeing
- ✓ kayaking
- ✓ rowing
- ✓ sailing
- ✓ fishing

\* Restrictions on engine type and speed limit apply

## NO

- ✗ dogs
- ✗ 4wd driving and motorbike riding
- ✗ tubing/wakeboarding
- ✗ jet skiing/water skiing
- ✗ dumping rubbish or littering
- ✗ hunting (of any form)
- ✗ overnight stays on the lake
- ✗ taking off or landing of aircraft (including amphibious aircraft)
- ✗ visiting outside of 6am-6pm

**In an emergency, call 000 or 112 in poor reception areas**



Always be DAM smart when you're visiting Lake Wivenhoe to ensure that everyone has a fun and safe day.

- Remember that there are no lifeguards on duty – always watch your children
- Follow instructions around fire safety - if you see a fire call 000 or 112
- Be aware of local fauna, such as snakes, and carry a first aid kit
- Lock your vehicle and don't leave valuables unattended
- Respect other visitors and be mindful of noise and other nuisances
- Exercise caution as water levels are subject to change and there may be submerged obstacles
- Keep in mind that much of the land surrounding the lake is private property which must not be accessed
- Don't swim after drinking alcohol and remain under 0.05 when driving your boat or vehicle.



## Please respect our neighbours

Some of the land close to the lake is private property. If a Seqwater sign is not displayed, that means the area is not a designated recreation area and you must not enter.



## Lake Wivenhoe Opening Hours

Access to all Seqwater sites, including on-water access, is only permitted between 6am – 6pm. The only exception is camping at a designated campground or if a permit expressly provides permission.

## Before you visit

Check the public notices section on our website for the latest information on access, closures and conditions before you visit any of our recreational areas.

For any other enquiries contact us at **recreation@seqwater.com.au** or **seqwater.com.au**.