

PURPOSE AND CONTENTS OF THIS MAP

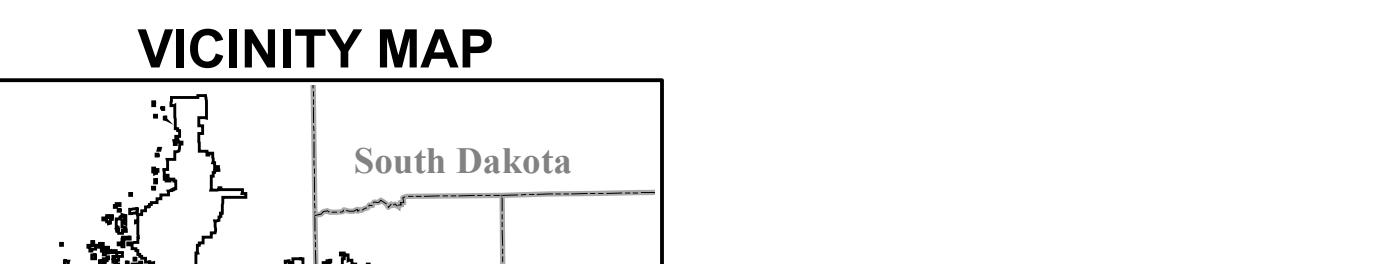
The designations shown on this motor vehicle use map (MVUM) were made by the responsible official pursuant to 36 CFR 212.51...

Designation of a road, trail, or area for motor vehicle use by a particular class of vehicle under 36 CFR 212.51 should not be interpreted as encouraging or inviting use...

This motor vehicle use map identifies those roads, trails, and areas designated for the motor vehicle use under 36 CFR 212.51 for the purpose of enforcing the prohibition...

These designations apply only to National Forest System roads, National Forest System trails, and areas on National Forest System lands.

These designations apply only to National Forest System roads, National Forest System trails, and areas on National Forest System lands.



Black Hills National Forest Headquarters 1019 N. 5th Street Custer, SD 57730 Phone: (605) 673-9200

Beardog Ranger District PO Box 680 101 S. 21st Street Sundance, WY 82729 Phone: (307) 263-1361

Hel Canyon Ranger District 1019 N. 5th Street Custer, SD 57730 Phone: (605) 673-9200

Black Hills National Forest Website: www.usda.gov/blackhills In Case of Emergency, Dial 911

INFORMATION SOURCES Black Hills National Forest Headquarters 1019 N. 5th Street Custer, SD 57730 Phone: (605) 673-9200

Beardog Ranger District PO Box 680 101 S. 21st Street Sundance, WY 82729 Phone: (307) 263-1361

Hel Canyon Ranger District 1019 N. 5th Street Custer, SD 57730 Phone: (605) 673-9200

Black Hills National Forest Website: www.usda.gov/blackhills In Case of Emergency, Dial 911

OPERATOR RESPONSIBILITIES

Operating a motor vehicle on National Forest System roads, National Forest System trails, and in areas on National Forest System lands carries a greater responsibility than operating that vehicle in a city or other developed setting.

Motor vehicle use, especially off-highway vehicle use, involves inherent risks that may cause property damage, serious injury, and possibly death to participants.

Much of the Black Hills National Forest is remote. Medical assistance may not be readily available. Cellular telephones do not work in many areas of the Black Hills National Forest.

ALWAYS REMEMBER TO RESPECT PRIVATE LAND! PROTECT YOUR PRIVILEGE. STAY ON DESIGNATED ROADS AND TRAILS AND IN DESIGNATED AREAS.

Read and understand this map in its entirety. If you have questions, please contact the Black Hills National Forest for clarification.

As a motor vehicle operator on a National Forest System road, trail, or area you must comply with this map, as well as all Federal, State, and local laws and regulations.

The U.S. Department of Agriculture (USDA) prohibits discrimination in all its programs and activities on the basis of race, color, national origin, age, disability, and where applicable, sex, marital status, familial status, parental status, religion, sexual orientation, genetic information, political beliefs, reprisal, or because all or part of an individual's income is derived from any public assistance program.

Persons with disabilities who require alternative means for communication of program information (Braille, large print, audiotape, etc.) should contact USDA's TARGET Center at (202) 720-2600 (voice and/or TDD).

Motorized Trails in the Wyoming portion of the Black Hills National Forest are enrolled in the Wyoming ORV Program and require vehicles to display a Wyoming ORV Permit.

"Roads Open To All" in the Wyoming portion of the Black Hills National Forest require operators to display a state license plate or a Wyoming ORV Permit.

"Roads Open To All" in the Wyoming portion of the Black Hills National Forest that are enrolled in the Wyoming ORV Program require operators to display a state license plate or a Wyoming ORV Permit.

"Roads Open To All" in the Wyoming portion of the Black Hills National Forest that are enrolled in the Wyoming ORV Program require operators to display a state license plate or a Wyoming ORV Permit.

Legend

- Roads Open to Highway Legal Vehicles Only
Special Designation: Trails Open to Vehicles 62" or Less in Width
Seasonal Designation
Dispersed Camping / Elk Retrieval
Elk Retrieval (ER) Zone
Interstate
Highways, U.S. State Other Public Roads
Motorized Trailhead
Picnic Area
Information Site
Peaks
Forest or Unit Boundary
National Forest System Lands
Non-National Forest System Lands within the National Forest
Political Boundary
Township and Range Lines
Section Lines
Lakes

EXPLANATION OF LEGEND ITEMS

Roads Open to Highway Legal Vehicles Only: These roads are open only to motor vehicles licensed under State law for general operation on all public roads within the state.

Roads Open to All Vehicles: These roads are open to all motor vehicles, including smaller off-highway vehicles that may not be licensed for highway use.

Special Designation: Trails Open to Vehicles 62 inches or Less in Width: Trails open only to motor vehicles 62 inches or less in width at the widest point of the vehicle.

Other Public Roads and Trails: Interstate, Highways, U.S., State, Other Public Roads

These symbols show routes the Forest Service does not have jurisdiction over and has not designated for motorized use.

Motorized Trail Access: This symbol indicates a trailhead for access to a motorized route.

Seasonal Designation: This symbol, used in conjunction with one of the other road or trail symbols, indicates that the road or trail is open during certain portions of the year.

Dispersed Camping/Elk Retrieval: This dotted symbol is used along with a designated road or trail symbol to indicate limited cross-country motor vehicle use within a specific distance of that road or trail.

Elk Retrieval (ER) Zone: This symbol indicates limited cross-country motor vehicle use within a specific distance of roads, solely for the purpose of elk retrieval.

Seasonal Road Designation Table: Table with columns for Road Number, Miles Allowed, Beginning Mile Post, Ending Mile Post, and Dates.

Seasonal Trail Designation Table: Table with columns for Trail Number, Dates, and Ending Mile Post.

BLANKET TRAVEL MANAGEMENT STATEMENTS: Roads and Trails requiring Permits: Motorized Trails in the South Dakota portion of the Black Hills National Forest require vehicles to display a Black Hills National Forest Motorized Trail Permit.

"Roads Open To All" in the South Dakota portion of the Black Hills National Forest require operators to have a Driver's License and vehicles to display a state license plate or a Black Hills National Forest Motorized Trail Permit.

Motorized Trails in the Wyoming portion of the Black Hills National Forest are enrolled in the Wyoming ORV Program and require vehicles to display a Wyoming ORV Permit.

"Roads Open To All" in the Wyoming portion of the Black Hills National Forest require operators to display a state license plate or a Wyoming ORV Permit.

"Roads Open To All" in the Wyoming portion of the Black Hills National Forest that are enrolled in the Wyoming ORV Program require operators to display a state license plate or a Wyoming ORV Permit.

"Roads Open To All" in the Wyoming portion of the Black Hills National Forest that are enrolled in the Wyoming ORV Program require operators to display a state license plate or a Wyoming ORV Permit.

"Roads Open To All" in the Wyoming portion of the Black Hills National Forest that are enrolled in the Wyoming ORV Program require operators to display a state license plate or a Wyoming ORV Permit.

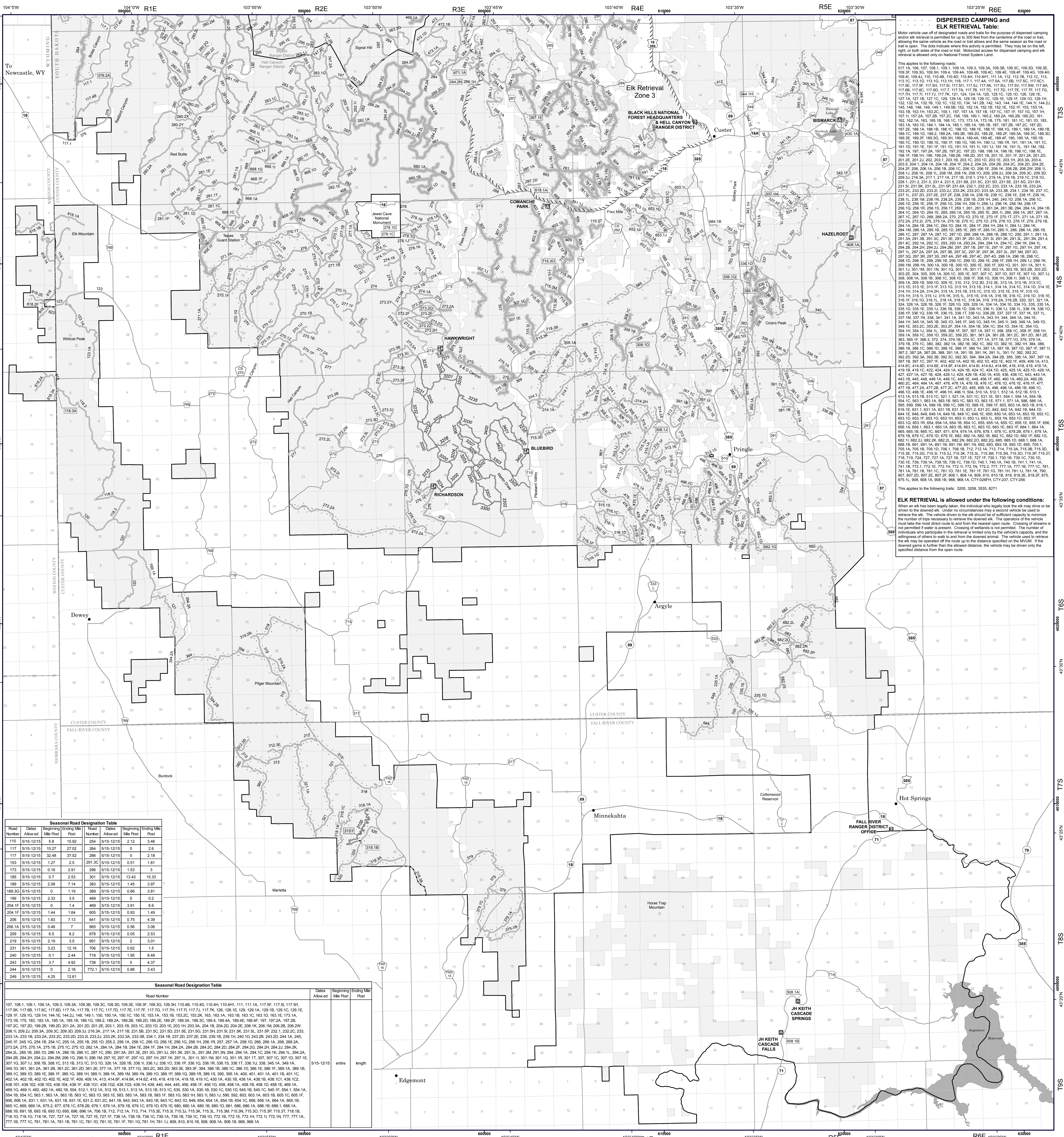
"Roads Open To All" in the Wyoming portion of the Black Hills National Forest that are enrolled in the Wyoming ORV Program require operators to display a state license plate or a Wyoming ORV Permit.

"Roads Open To All" in the Wyoming portion of the Black Hills National Forest that are enrolled in the Wyoming ORV Program require operators to display a state license plate or a Wyoming ORV Permit.

"Roads Open To All" in the Wyoming portion of the Black Hills National Forest that are enrolled in the Wyoming ORV Program require operators to display a state license plate or a Wyoming ORV Permit.

"Roads Open To All" in the Wyoming portion of the Black Hills National Forest that are enrolled in the Wyoming ORV Program require operators to display a state license plate or a Wyoming ORV Permit.

"Roads Open To All" in the Wyoming portion of the Black Hills National Forest that are enrolled in the Wyoming ORV Program require operators to display a state license plate or a Wyoming ORV Permit.



Seasonal Road Designation Table: Table with columns for Road Number, Miles Allowed, Beginning Mile Post, Ending Mile Post, and Dates.

Seasonal Trail Designation Table: Table with columns for Trail Number, Dates, and Ending Mile Post.

Seasonal Road Designation Table: Table with columns for Road Number, Miles Allowed, Beginning Mile Post, Ending Mile Post, and Dates.

Seasonal Road Designation Table: Table with columns for Road Number, Miles Allowed, Beginning Mile Post, Ending Mile Post, and Dates.

Seasonal Road Designation Table: Table with columns for Road Number, Miles Allowed, Beginning Mile Post, Ending Mile Post, and Dates.

Seasonal Road Designation Table: Table with columns for Road Number, Miles Allowed, Beginning Mile Post, Ending Mile Post, and Dates.

Seasonal Road Designation Table: Table with columns for Road Number, Miles Allowed, Beginning Mile Post, Ending Mile Post, and Dates.

DISPERSED CAMPING AND ELK RETRIEVAL Table:

Motor vehicle use off of designated roads and trails for the purpose of dispersed camping and/or elk retrieval is permitted for up to 200 feet from the centerline of the road or trail...

Table listing road numbers and mile posts for dispersed camping and elk retrieval, including roads like 107, 108, 109, 110, 111, etc.

This applies to the following roads: 017 1A, 106, 107, 108, 1, 109, 1A, 109.3, 109.3A, 109.3B, 109.3C, 109.3D, 109.3E, 109.3F, 109.3G, 109.3H, 109.3I, 109.3J, 109.3K, 109.3L, 109.3M, 109.3N, 109.3O, 109.3P, 109.3Q, 109.3R, 109.3S, 109.3T, 109.3U, 109.3V, 109.3W, 109.3X, 109.3Y, 109.3Z, 109.4, 109.4A, 109.4B, 109.4C, 109.4D, 109.4E, 109.4F, 109.4G, 109.4H, 109.4I, 109.4J, 109.4K, 109.4L, 109.4M, 109.4N, 109.4O, 109.4P, 109.4Q, 109.4R, 109.4S, 109.4T, 109.4U, 109.4V, 109.4W, 109.4X, 109.4Y, 109.4Z, 109.5, 109.5A, 109.5B, 109.5C, 109.5D, 109.5E, 109.5F, 109.5G, 109.5H, 109.5I, 109.5J, 109.5K, 109.5L, 109.5M, 109.5N, 109.5O, 109.5P, 109.5Q, 109.5R, 109.5S, 109.5T, 109.5U, 109.5V, 109.5W, 109.5X, 109.5Y, 109.5Z, 109.6, 109.6A, 109.6B, 109.6C, 109.6D, 109.6E, 109.6F, 109.6G, 109.6H, 109.6I, 109.6J, 109.6K, 109.6L, 109.6M, 109.6N, 109.6O, 109.6P, 109.6Q, 109.6R, 109.6S, 109.6T, 109.6U, 109.6V, 109.6W, 109.6X, 109.6Y, 109.6Z, 109.7, 109.7A, 109.7B, 109.7C, 109.7D, 109.7E, 109.7F, 109.7G, 109.7H, 109.7I, 109.7J, 109.7K, 109.7L, 109.7M, 109.7N, 109.7O, 109.7P, 109.7Q, 109.7R, 109.7S, 109.7T, 109.7U, 109.7V, 109.7W, 109.7X, 109.7Y, 109.7Z, 109.8, 109.8A, 109.8B, 109.8C, 109.8D, 109.8E, 109.8F, 109.8G, 109.8H, 109.8I, 109.8J, 109.8K, 109.8L, 109.8M, 109.8N, 109.8O, 109.8P, 109.8Q, 109.8R, 109.8S, 109.8T, 109.8U, 109.8V, 109.8W, 109.8X, 109.8Y, 109.8Z, 109.9, 109.9A, 109.9B, 109.9C, 109.9D, 109.9E, 109.9F, 109.9G, 109.9H, 109.9I, 109.9J, 109.9K, 109.9L, 109.9M, 109.9N, 109.9O, 109.9P, 109.9Q, 109.9R, 109.9S, 109.9T, 109.9U, 109.9V, 109.9W, 109.9X, 109.9Y, 109.9Z, 109.10, 109.10A, 109.10B, 109.10C, 109.10D, 109.10E, 109.10F, 109.10G, 109.10H, 109.10I, 109.10J, 109.10K, 109.10L, 109.10M, 109.10N, 109.10O, 109.10P, 109.10Q, 109.10R, 109.10S, 109.10T, 109.10U, 109.10V, 109.10W, 109.10X, 109.10Y, 109.10Z, 109.11, 109.11A, 109.11B, 109.11C, 109.11D, 109.11E, 109.11F, 109.11G, 109.11H, 109.11I, 109.11J, 109.11K, 109.11L, 109.11M, 109.11N, 109.11O, 109.11P, 109.11Q, 109.11R, 109.11S, 109.11T, 109.11U, 109.11V, 109.11W, 109.11X, 109.11Y, 109.11Z, 109.12, 109.12A, 109.12B, 109.12C, 109.12D, 109.12E, 109.12F, 109.12G, 109.12H, 109.12I, 109.12J, 109.12K, 109.12L, 109.12M, 109.12N, 109.12O, 109.12P, 109.12Q, 109.12R, 109.12S, 109.12T, 109.12U, 109.12V, 109.12W, 109.12X, 109.12Y, 109.12Z, 109.13, 109.13A, 109.13B, 109.13C, 109.13D, 109.13E, 109.13F, 109.13G, 109.13H, 109.13I, 109.13J, 109.13K, 109.13L, 109.13M, 109.13N, 109.13O, 109.13P, 109.13Q, 109.13R, 109.13S, 109.13T, 109.13U, 109.13V, 109.13W, 109.13X, 109.13Y, 109.13Z, 109.14, 109.14A, 109.14B, 109.14C, 109.14D, 109.14E, 109.14F, 109.14G, 109.14H, 109.14I, 109.14J, 109.14K, 109.14L, 109.14M, 109.14N, 109.14O, 109.14P, 109.14Q, 109.14R, 109.14S, 109.14T, 109.14U, 109.14V, 109.14W, 109.14X, 109.14Y, 109.14Z, 109.15, 109.15A, 109.15B, 109.15C, 109.15D, 109.15E, 109.15F, 109.15G, 109.15H, 109.15I, 109.15J, 109.15K, 109.15L, 109.15M, 109.15N, 109.15O, 109.15P, 109.15Q, 109.15R, 109.15S, 109.15T, 109.15U, 109.15V, 109.15W, 109.15X, 109.15Y, 109.15Z, 109.16, 109.16A, 109.16B, 109.16C, 109.16D, 109.16E, 109.16F, 109.16G, 109.16H, 109.16I, 109.16J, 109.16K, 109.16L, 109.16M, 109.16N, 109.16O, 109.16P, 109.16Q, 109.16R, 109.16S, 109.16T, 109.16U, 109.16V, 109.16W, 109.16X, 109.16Y, 109.16Z, 109.17, 109.17A, 109.17B, 109.17C, 109.17D, 109.17E, 109.17F, 109.17G, 109.17H, 109.17I, 109.17J, 109.17K, 109.17L, 109.17M, 109.17N, 109.17O, 109.17P, 109.17Q, 109.17R, 109.17S, 109.17T, 109.17U, 109.17V, 109.17W, 109.17X, 109.17Y, 109.17Z, 109.18, 109.18A, 109.18B, 109.18C, 109.18D, 109.18E, 109.18F, 109.18G, 109.18H, 109.18I, 109.18J, 109.18K, 109.18L, 109.18M, 109.18N, 109.18O, 109.18P, 109.18Q, 109.18R, 109.18S, 109.18T, 109.18U, 109.18V, 109.18W, 109.18X, 109.18Y, 109.18Z, 109.19, 109.19A, 109.19B, 109.19C, 109.19D, 109.19E, 109.19F, 109.19G, 109.19H, 109.19I, 109.19J, 109.19K, 109.19L, 109.19M, 109.19N, 109.19O, 109.19P, 109.19Q, 109.19R, 109.19S, 109.19T, 109.19U, 109.19V, 109.19W, 109.19X, 109.19Y, 109.19Z, 109.20, 109.20A, 109.20B, 109.20C, 109.20D, 109.20E, 109.20F, 109.20G, 109.20H, 109.20I, 109.20J, 109.20K, 109.20L, 109.20M, 109.20N, 109.20O, 109.20P, 109.20Q, 109.20R, 109.20S, 109.20T, 109.20U, 109.20V, 109.20W, 109.20X, 109.20Y, 109.20Z, 109.21, 109.21A, 109.21B, 109.21C, 109.21D, 109.21E, 109.21F, 109.21G, 109.21H, 109.21I, 109.21J, 109.21K, 109.21L, 109.21M, 109.21N, 109.21O, 109.21P, 109.21Q, 109.21R, 109.21S, 109.21T, 109.21U, 109.21V, 109.21W, 109.21X, 109.21Y, 109.21Z, 109.22, 109.22A, 109.22B, 109.22C, 109.22D, 109.22E, 109.22F, 109.22G, 109.22H, 109.22I, 109.22J, 109.22K, 109.22L, 109.22M, 109.22N, 109.22O, 109.22P, 109.22Q, 109.22R, 109.22S, 109.22T, 109.22U, 109.22V, 109.22W, 109.22X, 109.22Y, 109.22Z, 109.23, 109.23A, 109.23B, 109.23C, 109.23D, 109.23E, 109.23F, 109.23G, 109.23H, 109.23I, 109.23J, 109.23K, 109.23L, 109.23M, 109.23N, 109.23O, 109.23P, 109.23Q, 109.23R, 109.23S, 109.23T, 109.23U, 109.23V, 109.23W, 109.23X, 109.23Y, 109.23Z, 109.24, 109.24A, 109.24B, 109.24C, 109.24D, 109.24E, 109.24F, 109.24G, 109.24H, 109.24I, 109.24J, 109.24K, 109.24L, 109.24M, 109.24N, 109.24O, 109.24P, 109.24Q, 109.24R, 109.24S, 109.24T, 109.24U, 109.24V, 109.24W, 109.24X, 109.24Y, 109.24Z, 109.25, 109.25A, 109.25B, 109.25C, 109.25D, 109.25E, 109.25F, 109.25G, 109.25H, 109.25I, 109.25J, 109.25K, 109.25L, 109.25M, 109.25N, 109.25O, 109.25P, 109.25Q, 109.25R, 109.25S, 109.25T, 109.25U, 109.25V, 109.25W, 109.25X, 109.25Y, 109.25Z, 109.26, 109.26A, 109.26B, 109.26C, 109.26D, 109.26E, 109.26F, 109.26G, 109.26H, 109.26I, 109.26J, 109.26K, 109.26L, 109.26M, 109.26N, 109.26O, 109.26P, 109.26Q, 109.26R, 109.26S, 109.26T, 109.26U, 109.26V, 109.26W, 109.26X, 109.26Y, 109.26Z, 109.27, 109.27A, 109.27B, 109.27C, 109.27D, 109.27E, 109.27F, 109.27G, 109.27H, 109.27I, 109.27J, 109.27K, 109.27L, 109.27M, 109.27N, 109.27O, 109.27P, 109.27Q, 109.27R, 109.27S, 109.27T, 109.27U, 109.27V, 109.27W, 109.27X, 109.27Y, 109.27Z, 109.28, 109.28A, 109.28B, 109.28C, 109.28D, 109.28E, 109.28F, 109.28G, 109.28H, 109.28I, 109.28J, 109.28K, 109.28L, 109.28M, 109.28N, 109.28O, 109.28P, 109.28Q, 109.28R, 109.28S, 109.28T, 109.28U, 109.28V, 109.28W, 109.28X, 109.28Y, 109.28Z, 109.29, 109.29A, 109.29B, 109.29C, 109.29D, 109.29E, 109.29F, 109.29G, 109.29H, 109.29I, 109.29J, 109.29K, 109.29L, 109.29M, 109.29N, 109.29O, 109.29P, 109.29Q, 109.29R, 109.29S, 109.29T, 109.29U, 109.29V, 109.29W, 109.29X, 109.29Y, 109.29Z, 109.30, 109.30A, 109.30B, 109.30C, 109.30D, 109.30E, 109.30F, 109.30G, 109.30H, 109.30I, 109.30J, 109.30K, 109.30L, 109.30M, 109.30N, 109.30O, 109.30P, 109.30Q, 109.30R, 109.30S, 109.30T, 109.30U, 109.30V, 109.30W, 109.30X, 109.30Y, 109.30Z, 109.31, 109.31A, 109.31B, 109.31C, 109.31D, 109.31E, 109.31F, 109.31G, 109.31H, 109.31I, 109.31J, 109.31K, 109.31L, 109.31M, 109.31N, 109.31O, 109.31P, 109.31Q, 109.31R, 109.31S, 109.31T, 109.31U, 109.31V, 109.31W, 109.31X, 109.31Y, 109.31Z, 109.32, 109.32A, 109.32B, 109.32C, 109.32D, 109.32E, 109.32F, 109.32G, 109.32H, 109.32I, 109.32J, 109.32K, 109.32L, 109.32M, 109.32N, 109.32O, 109.32P, 109.32Q, 109.32R, 109.32S, 109.32T, 109.32U, 109.32V, 109.32W, 109.32X, 109.32Y, 109.32Z, 109.33, 109.33A, 109.33B, 109.33C, 109.33D, 109.33E, 109.33F, 109.33G, 109.33H, 109.33I, 109.33J, 109.33K, 109.33L, 109.33M, 109.33N, 109.33O, 109.33P, 109.33Q, 109.33R, 109.33S, 109.33T, 109.33U, 109.33V, 109.33W, 109.33X, 109.33Y, 109.33Z, 109.34, 109.34A, 109.34B, 109.34C, 109.34D, 109.34E, 109.34F, 109.34G, 109.34H, 109.34I, 109.34J, 109.34K, 109.34L, 109.34M, 109.34N, 109.34O, 109.34P, 109.34Q, 109.34R, 109.34S, 109.34T, 109.34U, 109.34V, 109.34W, 109.34X, 109.34Y, 109.34Z, 109.35, 109.35A, 109.35B, 109.35C, 109.35D, 109.35E, 109.35F, 109.35G, 109.35H, 109.35I, 109.35J, 109.35K, 109.35L, 109.35M, 109.35N, 109.35O, 109.35P, 109.35Q, 109.35R, 109.35S, 109.35T, 109.35U, 109.35V, 109.35W, 109.35X, 109.35Y, 109.35Z, 109.36, 109.36A, 109.36B, 109.36C, 109.36D, 109.36E, 109.36F, 109.36G, 109.36H, 109.36I, 109.36J, 109.36K, 109.36L, 10